

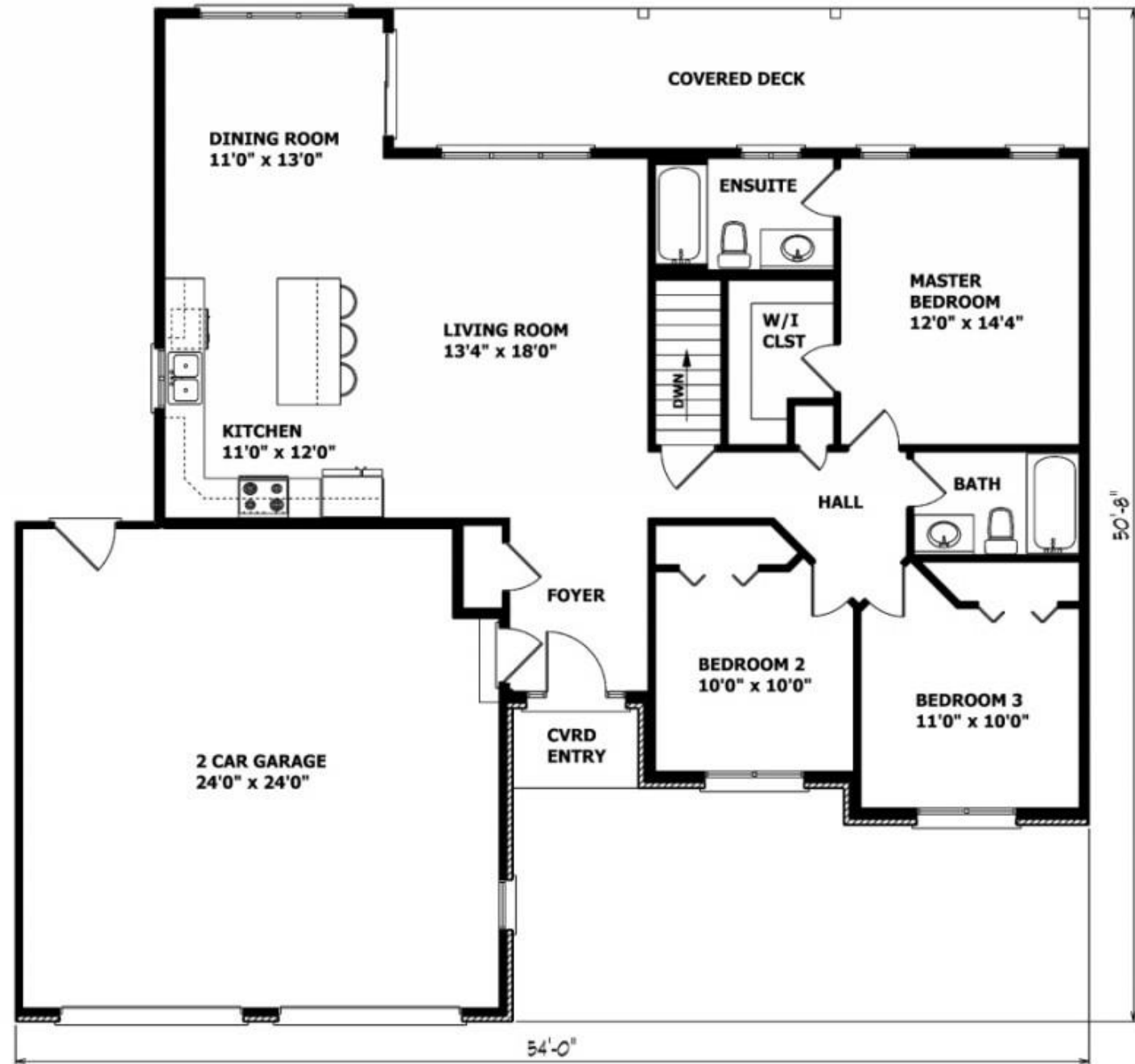


LEARNING AREA THROUGH FLOOR PLANS

SCENARIO

- Nose Creek Home Developments has been hired to design a one floor house design that follows strict building dimensions. You are going to need to create three possible floor plans, record the surface area of each room and prove your measurements are correct. This will require you to plan, draw, compute and colour in order to be hired for this job. Do you accept the offer?

FLOOR PLAN



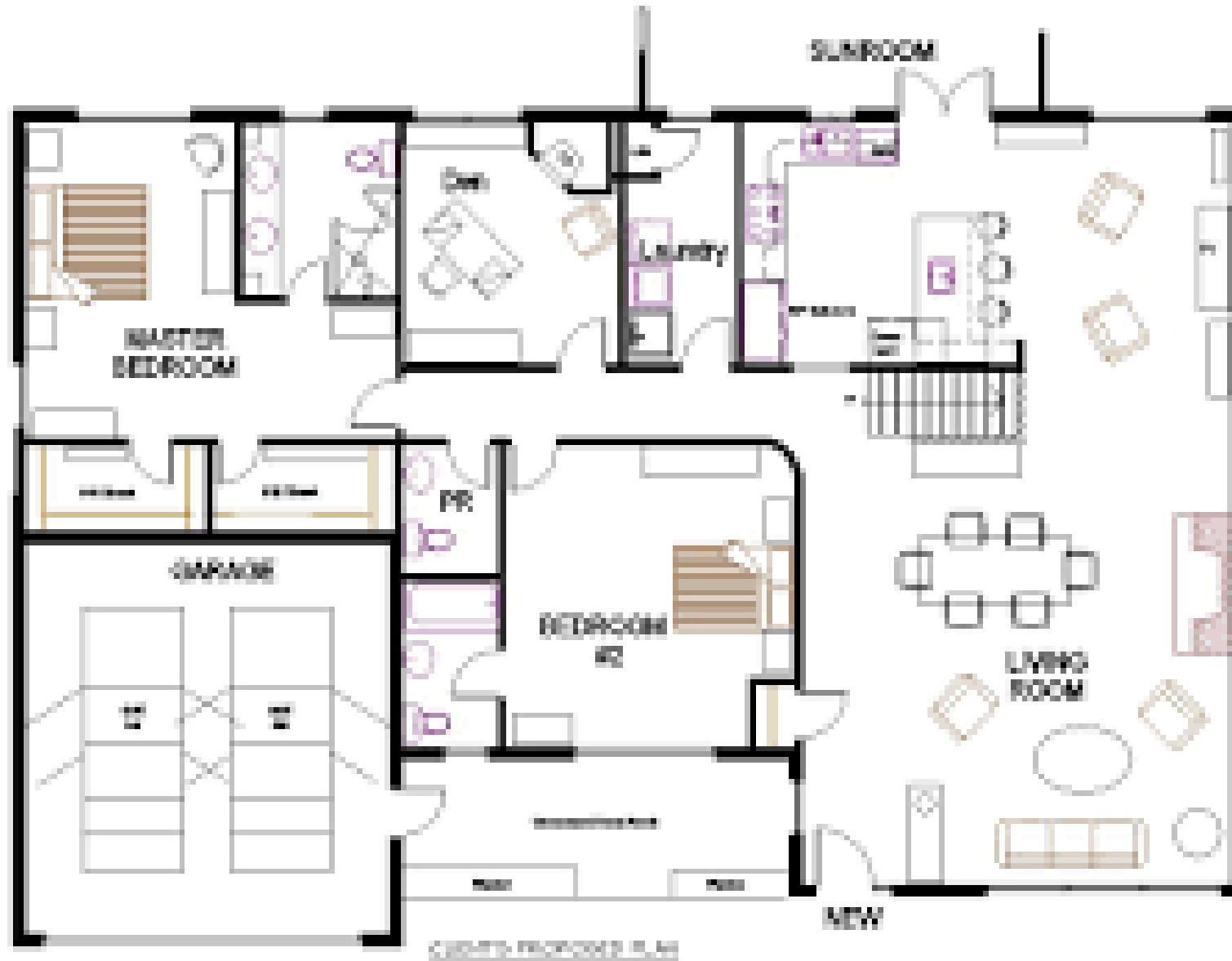
FLOOR PLAN

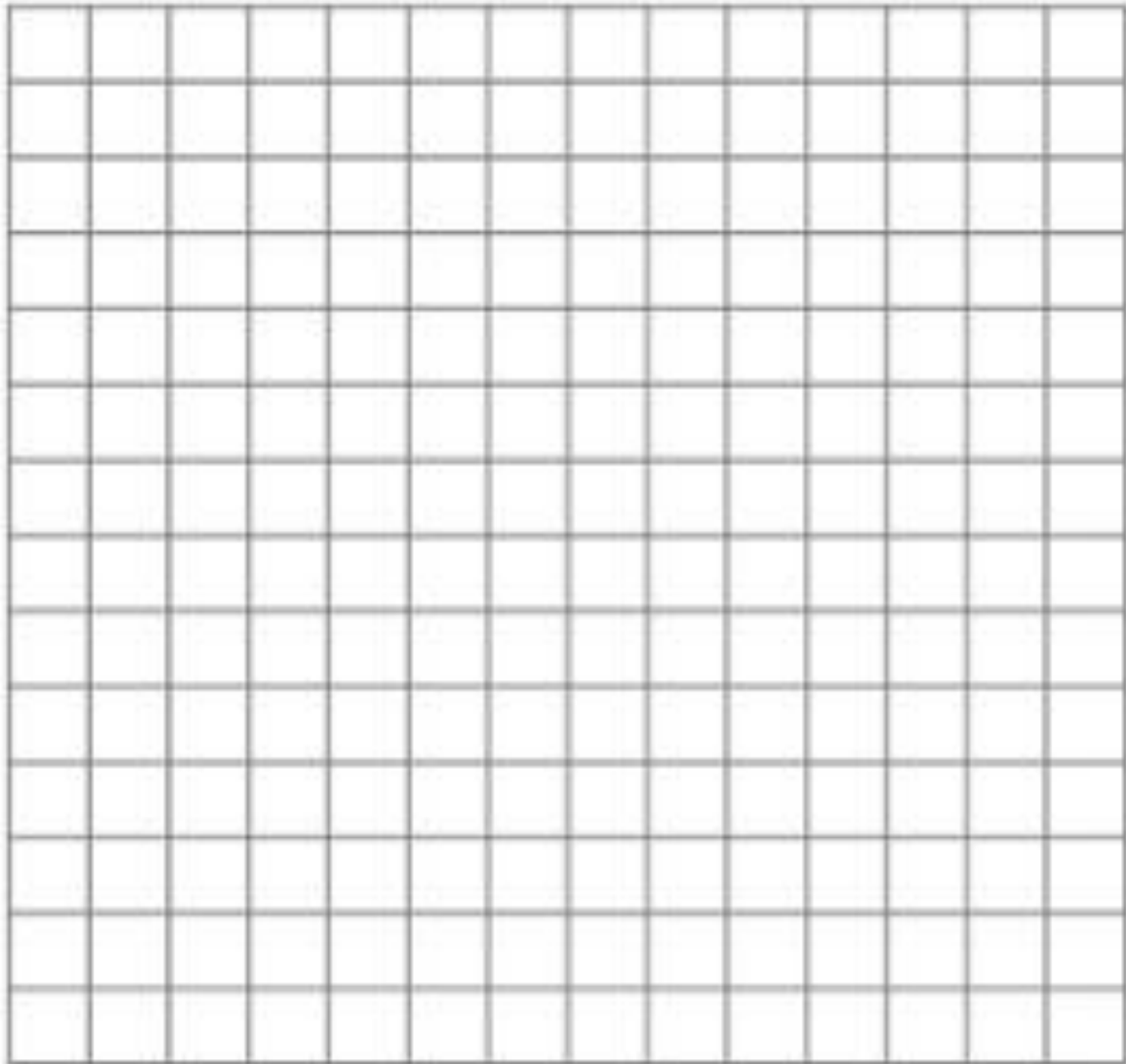
GROSS FLOOR AREA : 1368 SQ. FT.

FLOOR PLAN 2



FLOOR





Example

Room 1 needs to be
 10cm^2

Room 2 needs to be
 16cm^2

Room 3 needs to be
 18cm^2

WHAT YOUR HOUSE NEEDS

- Kitchen needs to be 18 square units
- Living room needs to be 6 units wide by 7 units long
- One bedroom is 32 square units
- Another bedroom needs to be between 20 units squared and 30 units square with the width being 4units
- Bathroom is 9units squared
- Games room is 28c units squared with the length being 7 units.

Equations finding
surface area of each
room

Total surface area
Perimeter of the
house

HOW DO I GET A 4?

4 needs:

- 2 completely different Floor plans
- correct mathematical Equations to prove your surface area is correct
- colour coding with legend To understand the drawing
- neat (ruler is used, organized and creative)

3 needs:

- 2 different Floor plans
- mostly correct mathematical Equations to prove your Surface area is correct
- Some sort of colouring might Not have a legend
- neatly drawn, organized and detailed

2 needs:

- 1-2 floor plans
- has most equations written with some being correct.
- Some errors in the design's instructions
- some colouring
- has neat qualities