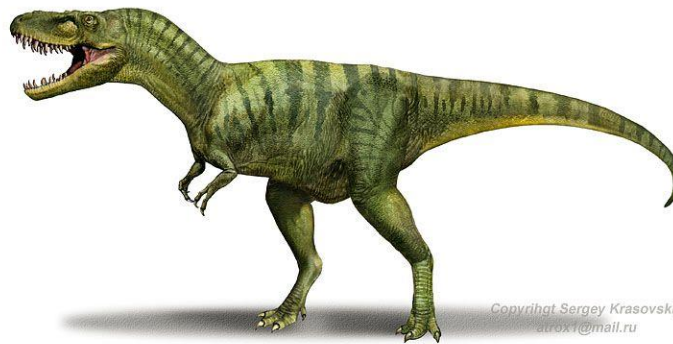


Name: _____ Date: _____

ANATOMY

Albertosaurus was a relative of [Tyrannosaurus rex](#); Albertosaurus was smaller than T. rex and lived a few million years earlier. Albertosaurus walked on two legs and had a large head with sharp, saw-toothed teeth. It had two-fingered hands on short arms. Its long tail provided balance and quick turning. It had powerful back legs with clawed, three-toed feet.

Albertosaurus was about 30 feet (9 m) long, about 11 feet (3.4 m) tall at the hips, and up to 3 tons in weight (averaging roughly 2500 kg). The lower jaw of Albertosaurus had from 14 and 16 teeth; the upper jaw had 17-19 teeth. It had one row of teeth in each jaw but had at least one replacement tooth growing up from under each tooth.



Copyright Sergey Krasovskiy
atrox1@mail.ru

Image uploaded from: <https://www.thoughtco.com/things-to-know-albertosaurus-1093770>

Questions:

When did Albertosaurus live?

How long was Albertosaurus?

What dinosaur was a relative of Albertosaurus?

Why do you think Albertosaurus had long sharp teeth?
